

**GNL3 Antibody (N-term)**  
**Purified Rabbit Polyclonal Antibody (Pab)**  
**Catalog # AW5435**

**Specification**

---

**GNL3 Antibody (N-term) - Product Information**

Application	WB, IF, E
Primary Accession	<a href="#">Q9BVP2</a>
Reactivity	Human
Host	Rabbit
Clonality	Polyclonal
Calculated MW	H=62, 61 KDa
Isotype	Rabbit IgG
Antigen Source	HUMAN

**GNL3 Antibody (N-term) - Additional Information**

**Gene ID** 26354

**Antigen Region**  
91-124

**Other Names**

Guanine nucleotide-binding protein-like 3, E2-induced gene 3 protein, Novel nucleolar protein 47, NNP47, Nucleolar GTP-binding protein 3, Nucleostemin, GNL3, E2IG3, NS

**Dilution**

WB~~1:1000  
IF~~1:25

**Target/Specificity**

This GNL3 antibody is generated from a rabbit immunized with a KLH conjugated synthetic peptide between 91-124 amino acids from the N-terminal region of human GNL3.

**Format**

Purified polyclonal antibody supplied in PBS with 0.09% (W/V) sodium azide. This antibody is purified through a protein A column, followed by peptide affinity purification.

**Storage**

Maintain refrigerated at 2-8°C for up to 2 weeks. For long term storage store at -20°C in small aliquots to prevent freeze-thaw cycles.

**Precautions**

GNL3 Antibody (N-term) is for research use only and not for use in diagnostic or therapeutic procedures.

**GNL3 Antibody (N-term) - Protein Information**

**Name** GNL3

**Synonyms** E2IG3, NS

**Function**

May be required to maintain the proliferative capacity of stem cells. Stabilizes MDM2 by preventing its ubiquitination, and hence proteasomal degradation (By similarity).

**Cellular Location**

Nucleus {ECO:0000250|UniProtKB:Q811S9}. Nucleus, nucleolus. Note=Shuttles between the nucleus and nucleolus. {ECO:0000250|UniProtKB:Q811S9}

**Tissue Location**

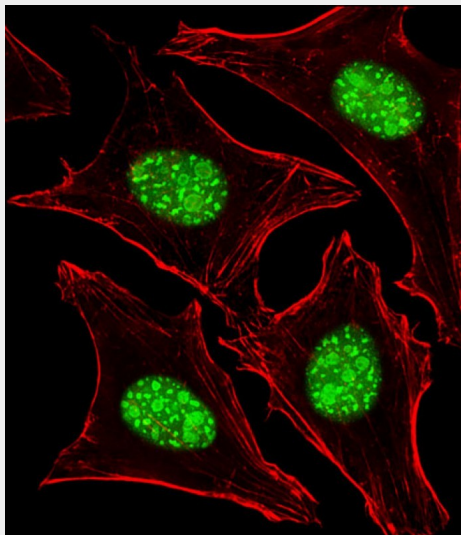
Increased levels in lung tissue in cancer patients.

**GNL3 Antibody (N-term) - Protocols**

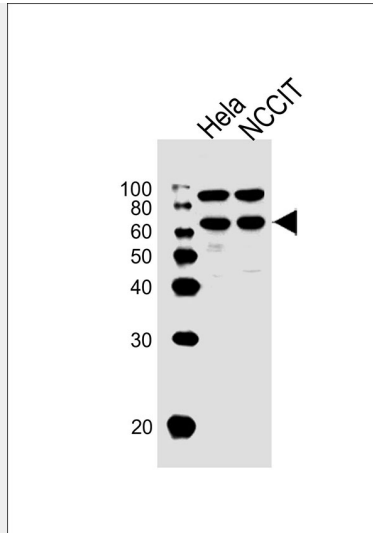
Provided below are standard protocols that you may find useful for product applications.

- [Western Blot](#)
- [Blocking Peptides](#)
- [Dot Blot](#)
- [Immunohistochemistry](#)
- [Immunofluorescence](#)
- [Immunoprecipitation](#)
- [Flow Cytometry](#)
- [Cell Culture](#)

**GNL3 Antibody (N-term) - Images**



Immunofluorescent analysis of 4% paraformaldehyde-fixed, 0.1% Triton X-100 permeabilized HeLa (Human cervical epithelial adenocarcinoma cell line) cells labeling GNL3 with AW5435 at 1/25 dilution, followed by Alexa Fluor 488-conjugated goat anti-rabbit IgG (1583138) secondary antibody at 1/400 dilution (green). Confocal image showing both nuclear staining on HeLa cell line. Cytoplasmic actin is detected with Alexa Fluor® 555 conjugated with Phalloidin (OB16636430) at 1/100 dilution (red).



All lanes : Anti-GNL3 Antibody (N-term) at 1:1000 dilution Lane 1: HeLa whole cell lysates Lane 2: NCCIT whole cell lysates Lysates/proteins at 20 µg per lane. Secondary Goat Anti-Rabbit IgG, (H+L), Peroxidase conjugated at 1/10000 dilution Predicted band size : 62 kDa Blocking/Dilution buffer: 5% NFDN/TBST.

#### **GNL3 Antibody (N-term) - Background**

May be required to maintain the proliferative capacity of stem cells. Stabilizes MDM2 by preventing its ubiquitination, and hence proteasomal degradation (By similarity).

#### **GNL3 Antibody (N-term) - References**

- Charpentier A.H., et al. *Cancer Res.* 60:5977-5983(2000).
- Han C., et al. *Int. J. Mol. Med.* 16:205-213(2005).
- Ota T., et al. *Nat. Genet.* 36:40-45(2004).
- Muzny D.M., et al. *Nature* 440:1194-1198(2006).
- Andersen J.S., et al. *Curr. Biol.* 12:1-11(2002).